



INDOFINE Chemical Company, Inc.

121 Stryker Lane, Bldg. 30, Suite 1 • Hillsborough, NJ 08844 • U.S.A.

Phone: (908) 359-6778 • FAX: (908) 359-1179

website: www.indofinechemical.com

e-mail: chemical@indofinechemical.com

CERTIFICATE OF ANALYSIS

Catalog Number: 06-1408

Product Name: (+)-GALLOCATECHIN

Cas Number: [970-73-0]

Lot Number: 2211729

Chemical Formula: C₁₅H₁₄O₇

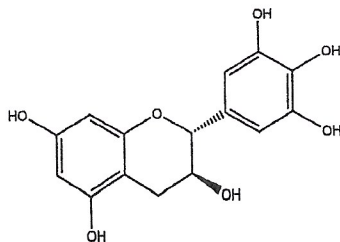
Molecular Weight: 306.27

Appearance: Off-white powder

Water Content: 0.7%

Storage: Store in a cool, dry place. Protect from light.

Purity (HPLC): 99.8%



Prepared by:
Ramesh Mandadi
Ramesh Mandadi
Director of Operations

Reviewed and Approved by:
Sujata Moton
Sujata Moton
VP



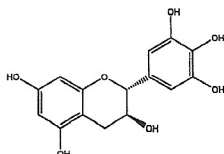
INDOFINE Chemical Company, Inc.

121 Stryker Lane, Bldg. 30, Suite 1 • Hillsborough, NJ 08844 • U.S.A.

Phone: (908) 359-6778 • FAX: (908) 359-1179

website: www.indofinechemical.com

e-mail: chemical@indofinechemical.com



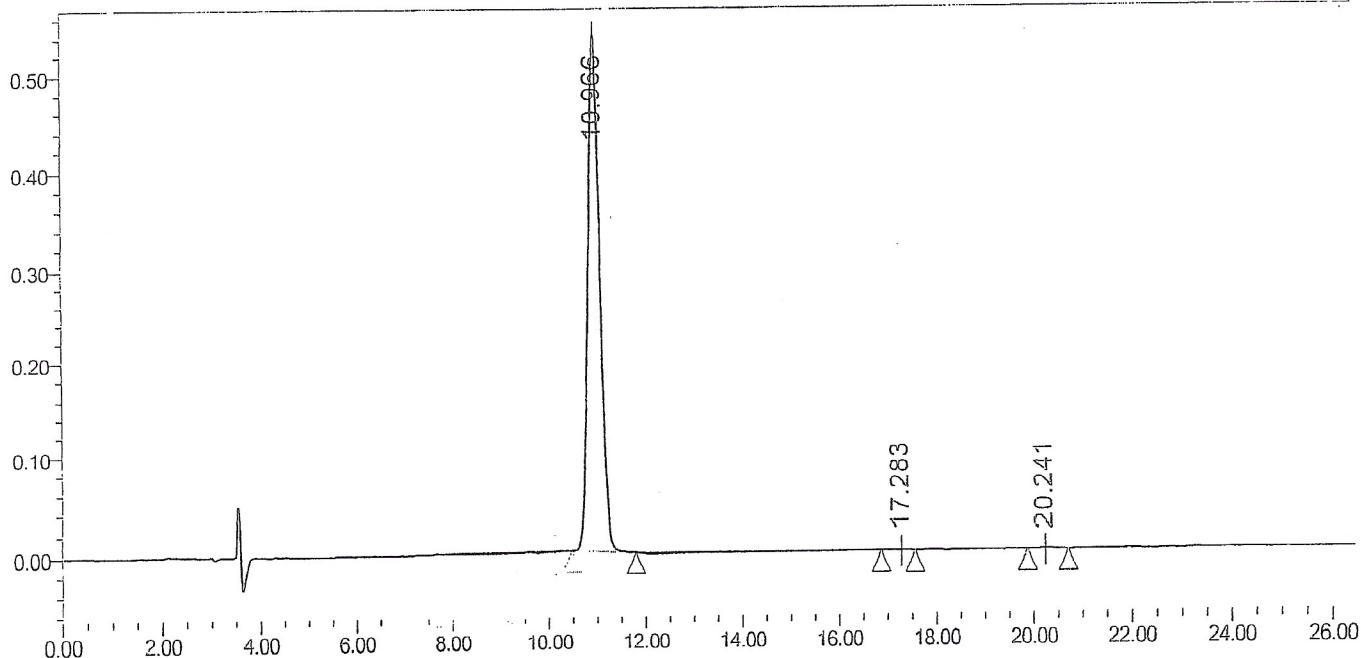
HPLC ANALYSIS

Catalog No.: 06-1408
Product Name: (+)-Galocatechin
Lot No.: 2211729

SAMPLE INFORMATION

Sample Name:	Galocatechin	Acquired By:	
Sample Type:	Control	Sample Set Name	
Vial:	39	Acq. Method Set:	Galocatechin
Injection #:	1	Processing Method	sample
Injection Volume:	10.00 ul	Channel Name:	PDA Ch1 230nm@4.8nm
Run Time:	30.0 Minutes	Proc. Chnl. Descr.:	PDA Ch1 230nm@4.8nm

Auto-Scaled Chromatogram



Peak Results

Name	RT	Area	% Area	Height (μV)	USP Plate Count	USP Resolution
1	10.966	9205564	99.89	540985	9378.90	
2	17.283	4204	0.05	210	11988.83	8.11
3	20.241	6251	0.07	279	1478.59	3.55